

FOR  
SALE

# Meadows Business Park

*HWY 65 and Hubbell Ave, Des Moines, IA*

Meadows Business Park is a 12.99 acre M-1 development with direct visibility to HWY 65 and direct access to Hubbell Avenue in Des Moines. Property includes adjacent 19 acre parcel that includes stocked pond. Water through site, culdi-sac partially installed. Current A-1 Zoning.

PRIDE IN OWNERSHIP PROVIDES  
VALUE FOR OUR CLIENTS

EVERYDAY

Anderson Properties  
3011 Justin Dr.  
Urbandale, IA 50322

## ATTRIBUTES

- 12.99 acres developable
- Hwy 65 Frontage.
- At NW corner of HWY 65 and Hubbell Avenue.
- Retention to pond.
- Gas/Electric/Water utilities.
- Future DSM Sanitary Sewer Service.
- Private street partially installed.

For information contact  
Bill or Mark Anderson

515-270-6104



ANDERSON  
PROPERTIES

# Meadows Business Park Area Map

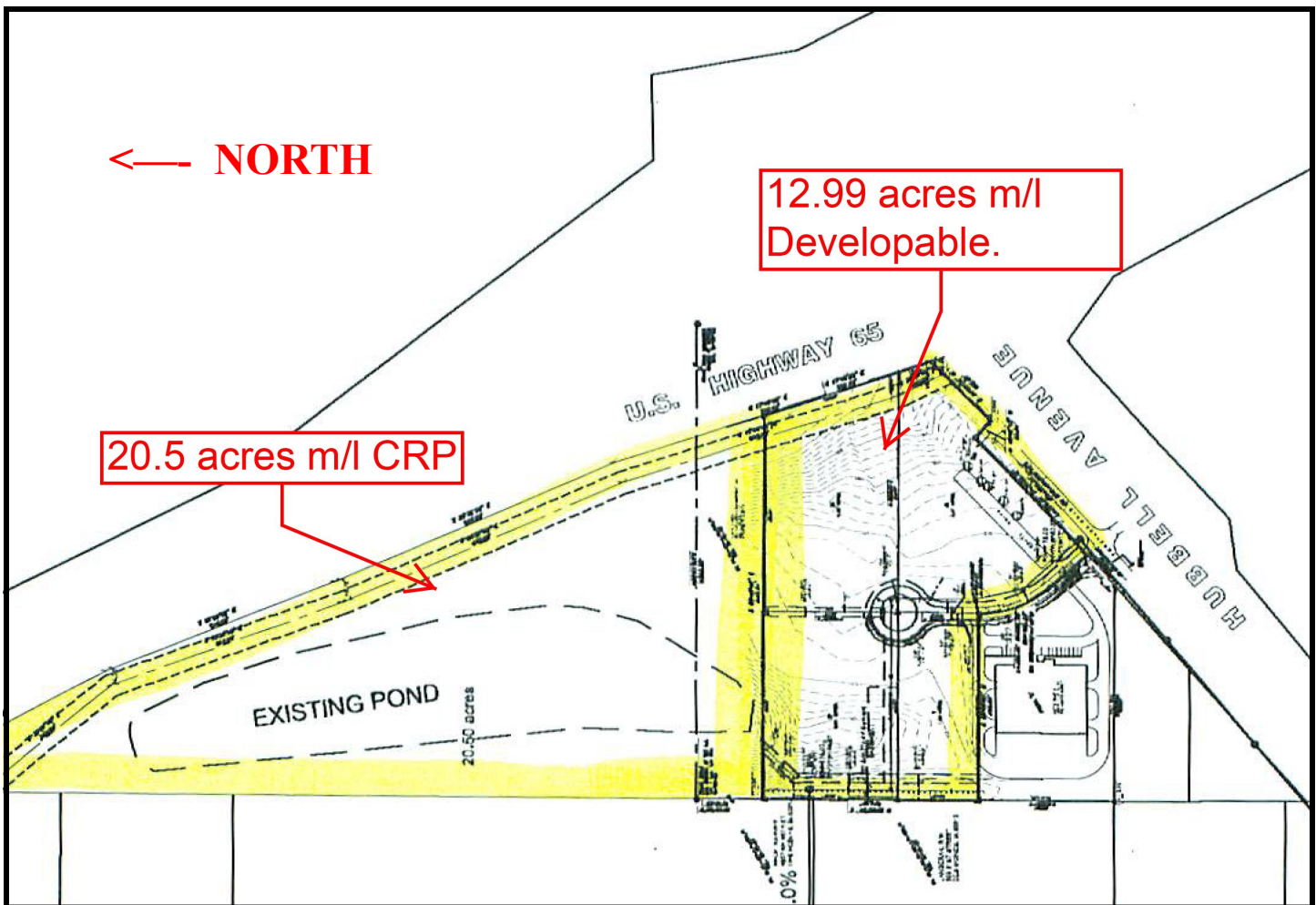




# Meadows Business Park

*12.99 acres developable, w/19 acre adjacent wetland property.*

## Plat Map



Contact:  
Bill Anderson  
Mark Anderson

270-6104



**ANDERSON  
PROPERTIES**

# PLAT MAP CLOSEUP

